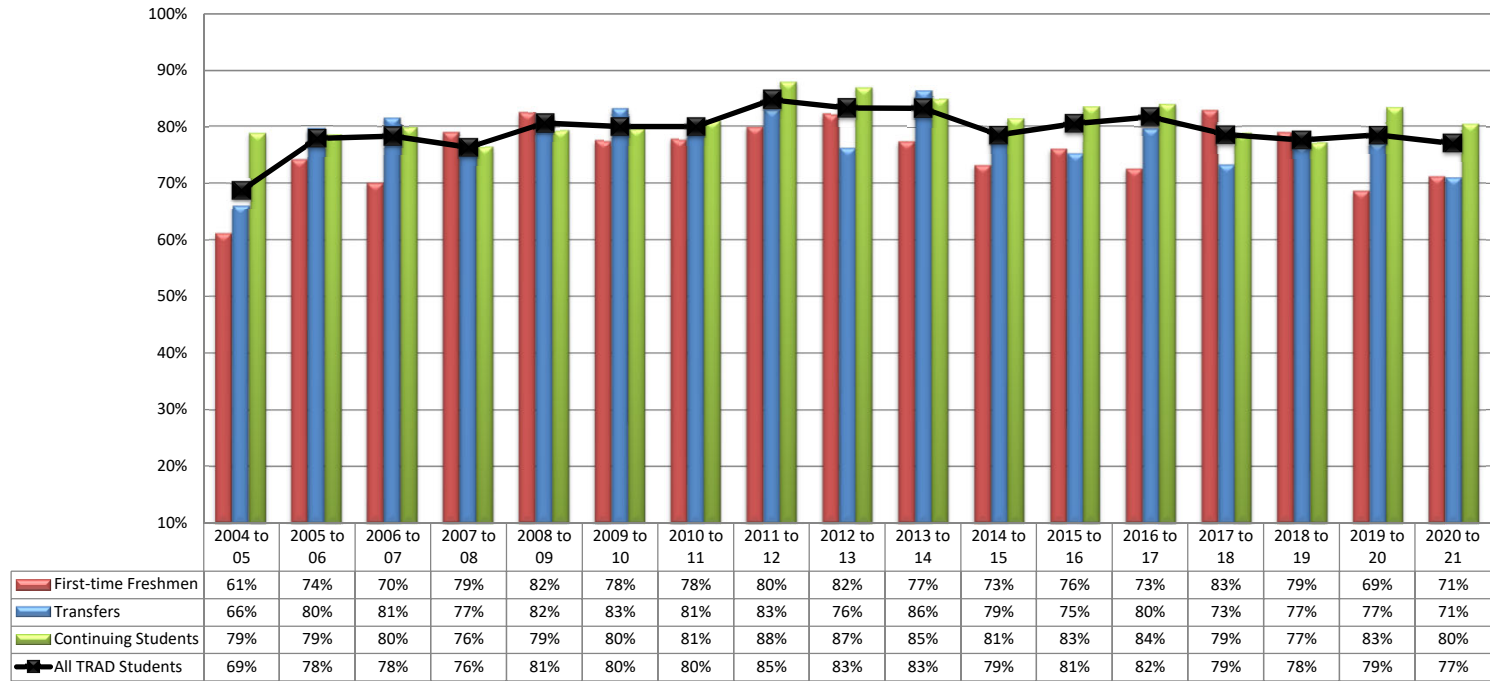


### Fall to Fall Retention Rates

Fall Term only -Traditional Undergraduate Program (includes switches to ADC/Online)



Fall Semester	All New TRAD Students <sup>1</sup>			First-time Freshmen			Transfers			Continuing Students			All Traditional Students (degree-seeking)				
	Total	Returning	%	Total	Returning	%	Potential Returners	Returning	%	Potential Returners	Returning	%	Total Enrollment	Grads <sup>2</sup>	Potential Returners	Returning	%
2020 to 21	259	184	71%	142	101	71%	117	83	71%	491	395	80%	952	201	751	579	77%
2019 to 20	345	250	72%	191	131	69%	154	119	77%	475	396	83%	1029	207	822	646	79%
2018 to 19	360	281	78%	209	165	79%	151	116	77%	468	361	77%	1020	194	826	642	78%
2017 to 18	326	255	78%	169	140	83%	157	115	73%	446	347	78%	971	199	772	602	78%
2016 to 17	348	263	76%	200	145	73%	148	118	80%	398	334	84%	969	239	730	597	82%
2015 to 16	263	199	76%	146	111	76%	117	88	75%	448	374	83%	893	182	711	573	81%
2014 to 15	352	266	76%	212	155	73%	140	111	79%	382	311	81%	917	183	734	577	79%
2013 to 14	309	252	82%	163	126	77%	146	126	86%	337	286	85%	822	176	646	538	83%
2012 to 13	265	210	79%	135	111	82%	130	99	76%	312	271	87%	754	177	577	481	83%
2011 to 12	256	209	82%	119	95	80%	137	114	83%	264	232	88%	661	141	520	441	85%
2010 to 11	232	184	79%	117	91	78%	115	93	81%	215	174	81%	542	95	447	358	80%
2009 to 10	184	148	80%	89	69	78%	95	79	83%	147	117	80%	400	69	331	265	80%
2008 to 09	112	92	82%	57	47	82%	55	45	82%	121	96	79%	311	78	233	188	81%
2007 to 08	110	84	76%	57	45	79%	52	40	77%	123	94	76%	333	100	233	178	76%
2006 to 07	104	79	76%	50	35	70%	54	44	81%	164	131	80%	357	89	268	210	78%
2005 to 06	122	94	77%	58	43	74%	64	51	80%	182	143	79%	342	38	304	237	78%
2004 to 05	181	111	61%	72	44	61%	109	72	66%	85	67	79%	304	38	266	183	69%

<sup>1</sup> excludes new transfer students who graduated within the year

<sup>2</sup> includes prospective grads who did not graduate that year but did soon after